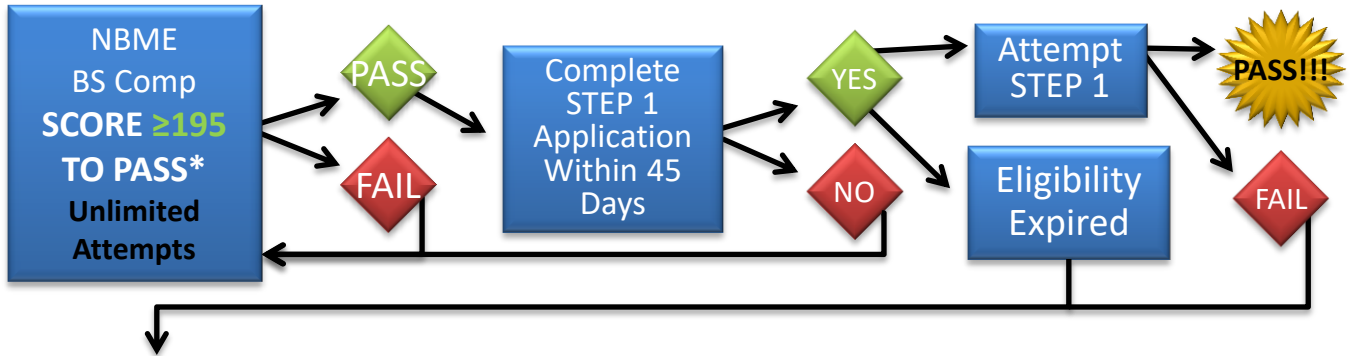
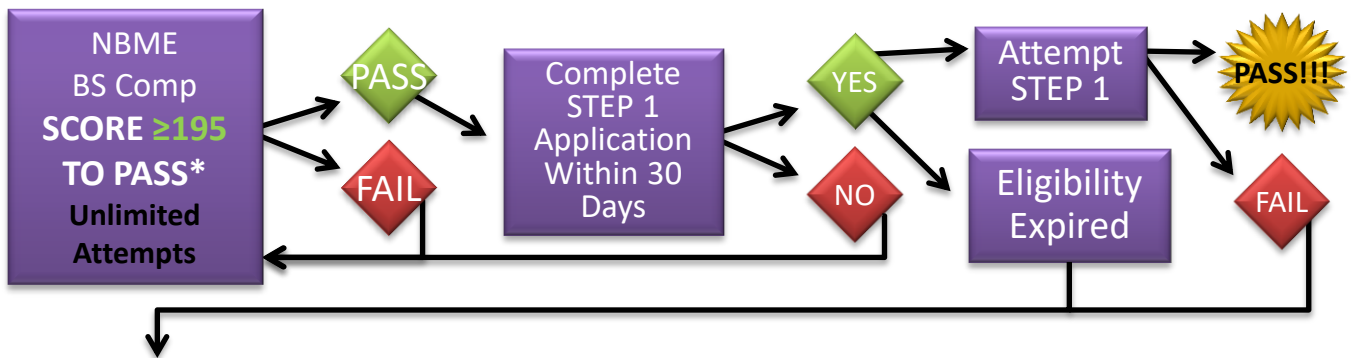


USMLE Step 1 Approval Process

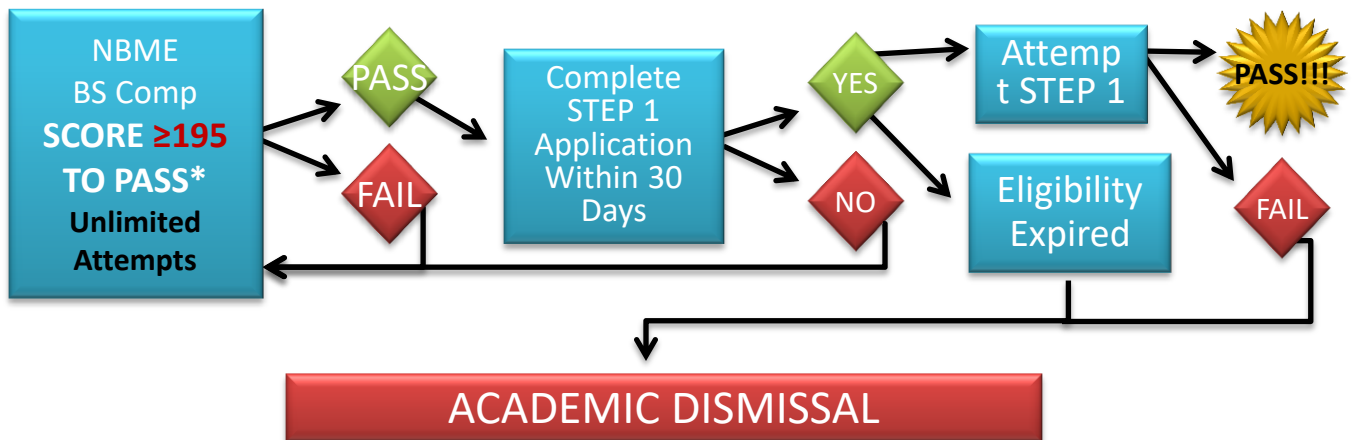
First Step 1 Application and Eligibility Period



Second Step 1 Application and Eligibility Period



Third Step 1 Application and Eligibility Period



*Required score to pass NBME based on the number of times student has applied for Step 1, NOT NBME attempts. NBME attempts are not limited; however SJSM will only approve up to three Step 1 applications.